

Primary Care Workflow Diagrams



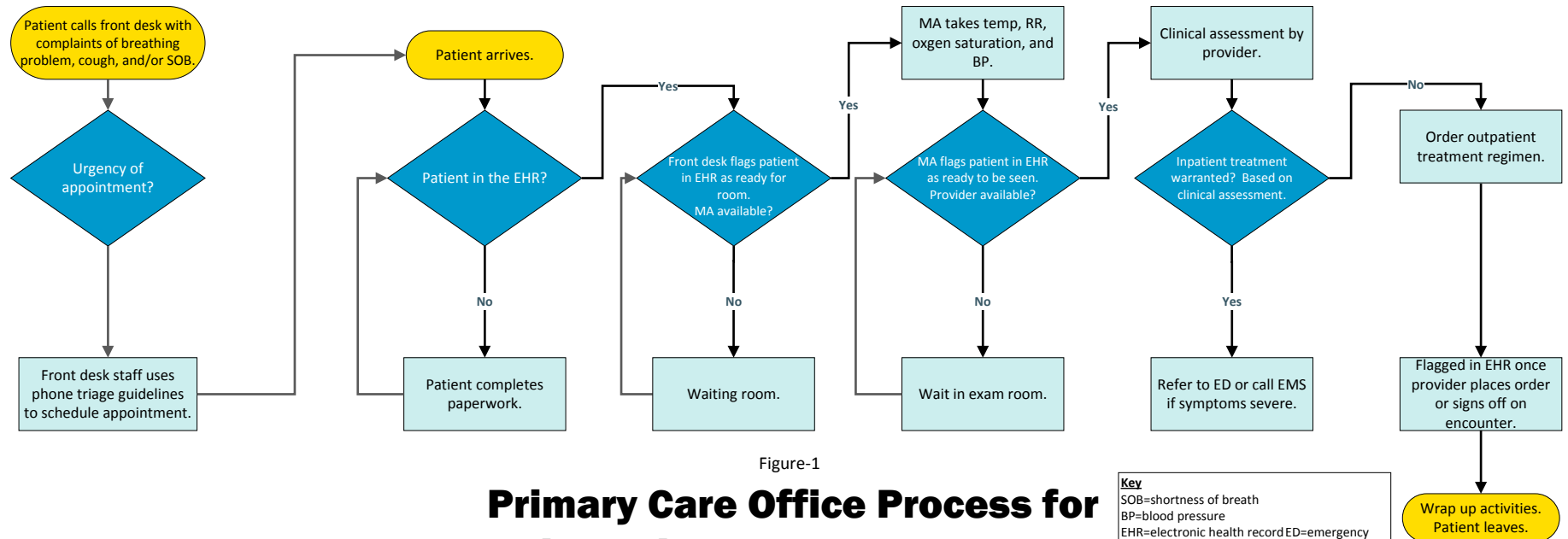


Figure-1

Primary Care Office Process for Patient with Suspected CAP (Pre-Implementation)

Key
 SOB=shortness of breath
 BP=blood pressure
 EHR=electronic health record ED=emergency department
 MA=medical assistant
 RR=respiratory rate
 EMS=emergency medical services
 CAP=community-acquired pneumonia

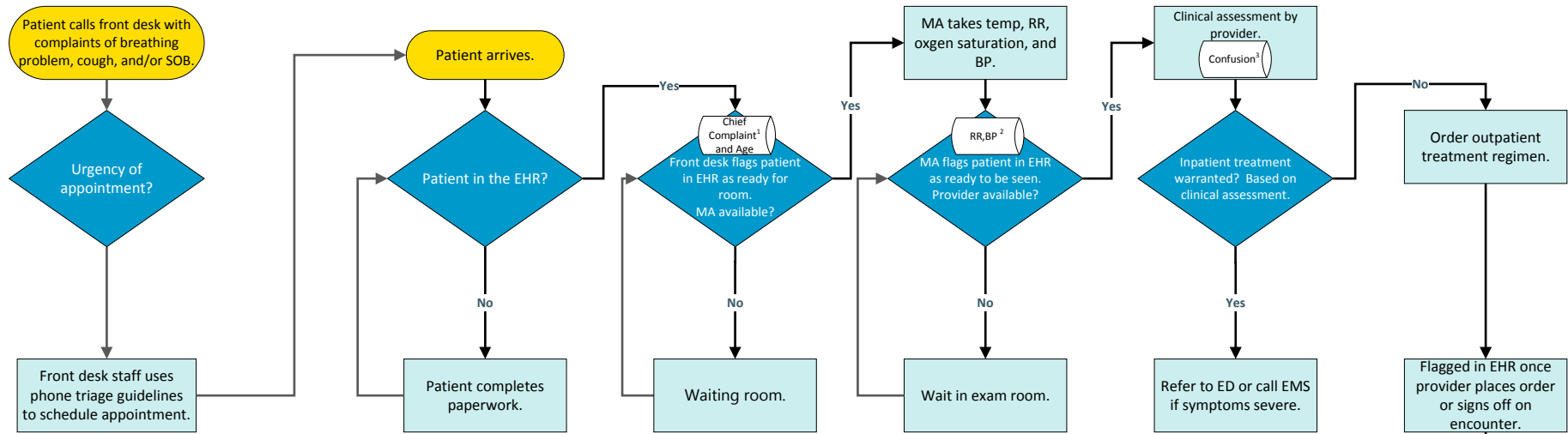


Figure-2

Primary Care Office Process for Patient with Suspected CAP (Pre-Implementation) with Data Elements

Notes

- 1 EHR Data Element: Chief complaint is entered either as free text (unstructured) or selected from a drop down list (structured).
- 2 EHR Data Element: The respiratory rate and systolic blood pressure (part of the CURB-65) are available here.
- 3 Confusion is clinically assessed by provider and entered into EHR documentation.

Key

- SOB=shortness of breath
- BP=blood pressure
- EHR=electronic health record ED=emergency department
- MA=medical assistant
- RR=respiratory rate
- EMS=emergency medical services
- CAP=community-acquired pneumonia

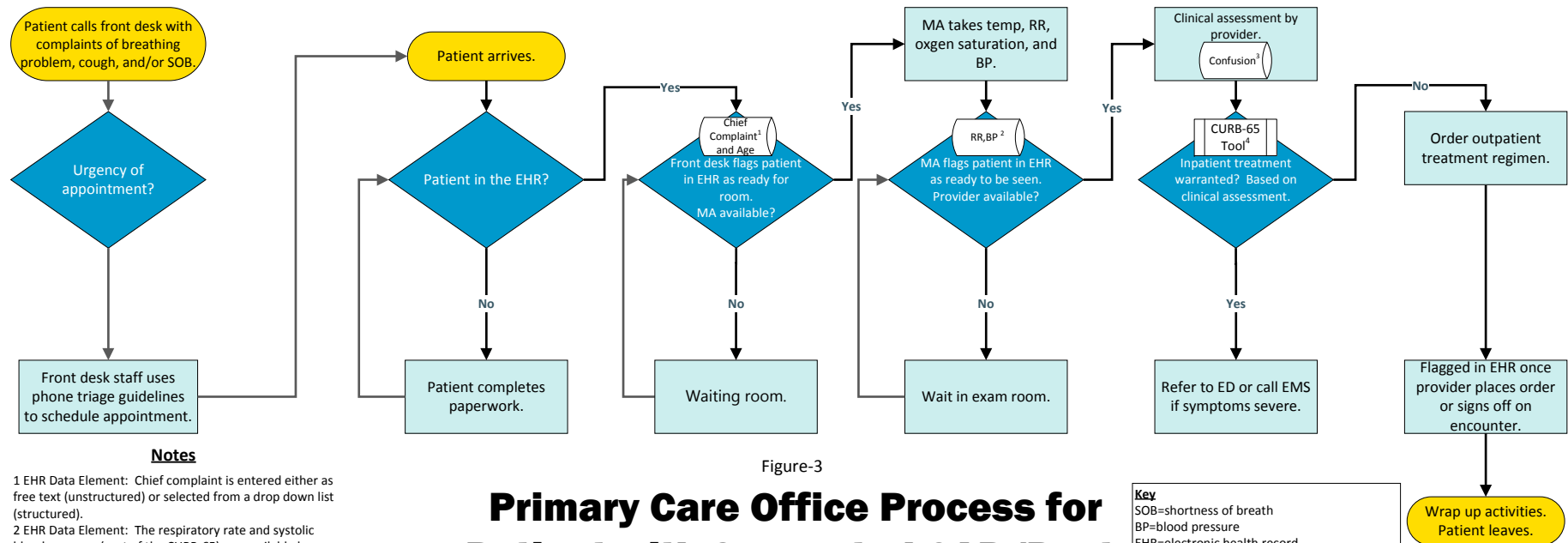


Figure-3

Primary Care Office Process for Patient with Suspected CAP (Post-Implementation)

- Notes**
- 1 EHR Data Element: Chief complaint is entered either as free text (unstructured) or selected from a drop down list (structured).
 - 2 EHR Data Element: The respiratory rate and systolic blood pressure (part of the CURB-65) are available here.
 - 3 Confusion is clinically assessed by provider and entered into EHR documentation.
 - 4 CURB-65 Tool is made available to provider through non-interruptive reminder. User initiation is necessary to launch tool.

- Key**
- SOB=shortness of breath
 - BP=blood pressure
 - EHR=electronic health record
 - ED=emergency department
 - MA=medical assistant
 - RR=respiratory rate
 - EMS=emergency medical services
 - CAP=community-acquired pneumonia



AHRQ Pub. No. 18-0020-7-EF
January 2018

www.ahrq.gov